



2011
Expert
Leg A

Welcome to the 2011 No Winter Maintenance Rally

The following short forms will be used in the rally:

S Stop sign; will be followed by R, L or SA.

R Turn right

L Turn left

SA Straight ahead

T Tee. 3-way intersection approached from the stem of the T (A 3-way that allows you to go straight ahead is a "junction" and has no short form.)

TS Traffic signal

SOS Start of section

EOS End of section - time to reset your trip odometer to 0.0 and start the next section.

EOL End of Leg - Both Legs end at the Flying Spatula.

EOR End of Rally

BQZ EQZ Begin Quiet Zone / End Quiet Zone. No extra lights or excess noise End Quiet Zone.

CAS Commence Average Speed (this is the target average speed from the stated distance).

ORT Oncoming Rally Traffic. You may expect to see other competitors travelling the opposite way on the road.

Complete all section in order, lowest to highest (1,2,3,4)

All CAS instructions are provided with the distance in km, and a speed in km/h. All distances are accumulative unless stated otherwise.

Roads with "Dead End", "Not a Through Road" or "No Exit" signs are deemed not to exist **unless otherwise noted**.

The last instruction of a section is the same as the first instruction of the next section. If you come to an intersection for which you have no instruction, just go straight ahead.

There are no spelling 'gotchas' in this rally. If you come across a spelling mistake or the like, it is not a trick.

Competitors are at all times bound by the provisions of the Provincial Highway Traffic Act and other statutes. The organizer reserves the right to disqualify any competitor who disregards the rules of the road.

IF YOU GET LOST determine where you are on the End of Section map. Go to the start of the next section that starts after the time you are at. Reset your odometer to zero and you are back in the rally. Car 0 times are given at the end of each section. This time plus your car number is approximately the time you should be there. If you are more than 25 minutes behind this time, skip ahead to the next section until you are within the 25 minute window.

PLEASE NOTE: Should you encounter any major problems and not be able to make it to the finish, please be sure to call the rally organizer, Stephen Deneka, on his cell phone to let him know. His number is 416-823-7991. If you can't reach Stephen, try Trevor at 416-388-2096.

ODO CHECK

Start of Rally: Start on the eastern edge of the Flying Spatula parking lot. Zero your odometer by the hydro pole on the east side of the lot before leaving.

Take 18 minutes to reach the ODO check at 13.63 km.

Distance - Instruction

00.00 km - Turn right onto Collingwood St / Grey 4 Hwy
00.59 km - Straight Ahead past E Back Line (Left Junction)
00.91 km - Turn right onto E Back Line (right Junction)
02.98 km - Stop, Turn right onto 160 Rd
03.46 km - Straight Ahead past Concession Rd 4
04.96 km - Stop, Straight ahead past Hwy 10
07.12 km - Stop, Turn left onto W Back Line
09.20 km - Straight Ahead past 170 Rd - Begin ORT (Oncoming Rally Traffic)
10.29 km - Caution - Single Lane Bridge
11.29 km - Straight Ahead past 180 Rd - End ORT
13.38 km - Turn Right onto Proton Artemesia Town Line
13.63 km - **ODO CHECK** at the first reflector on the bridge. Note your distance and move off the bridge so others may take an accurate reading.
14.40 km - Forced Right onto Boar Farm Rd.
14.90 km - Bear Left onto Proton Artemesia TL
19.33 km - Straight Ahead at Sideroad 13
20.02 km - Bridge
20.38 km - Bridge
21.40 km - Stop, Turn Right onto Grey Rd 14.

CAS Table

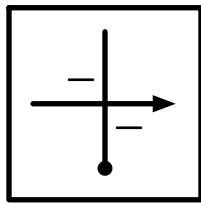
13.63 km CAS 72 kph
20.38 km CAS 64.6 kph

Tulips

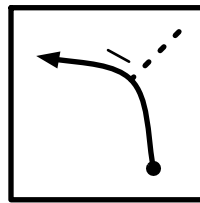
Follow the Tulips to the end of section. Enter each instruction on the dot, exit on the arrow. Only turns are provided. Continue straight at intersections with no corresponding tulip distance below. There is a 30 second pause at 19.16 km. Watch for signs of trickery.

CAS TABLE

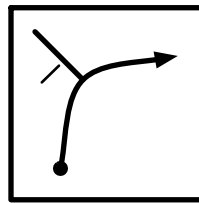
0.00 - 76 kph
3.59 - 68.4 kph
6.16 - 72 kph
15.46 - 45 kph
16.00 - 46.3 kph
17.68 - 72 kph



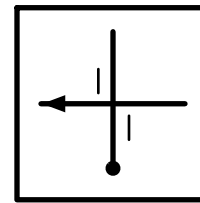
00.00 km



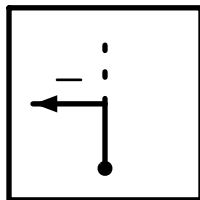
1.26 km



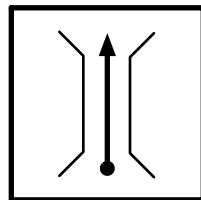
1.97 km



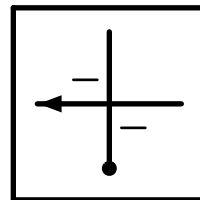
3.59 km



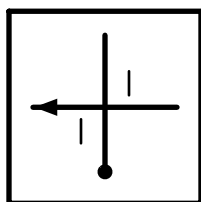
9.36 km



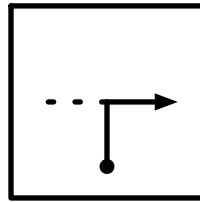
11.41 km
1 Lane Bridge



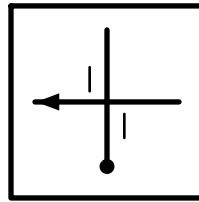
10.41 km
ORT to 12.51



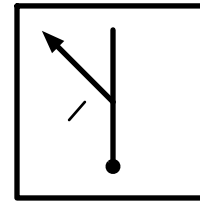
12.51 km



13.56 km



15.46 km
BQZ



17.68 km
EQZ

Clues for Section 3 (see next page)

ARTEMESIA
ROADFOURTY
GREYROAD
HAMLANE
MAPLELEAFWR

SPRINGRUN
BLOSSOM
DISCOVERON
TACAUGUST
PRESPRIZE

CONCFOUR
NOWINTER
JANJAUNT
CONCSIX
OPENROAD

INFMONKEY
RIDEAUWR
WESTBACK
ONETENRD

Roads and Rallies

Find the clues from the previous page hidden in the text block below. They may be written forwards and backwards, horizontally or vertically. Clues found horizontally validate instructions on the same row on the right, while clues found vertically validate instructions on the same column below. Not all of the instructions are used, as there are some duplicate distances, but only one instruction per distance is valid. The first instruction is in bold as example. Other words hidden in the block are irrelevant (and in one case unintentional).

Caution! - 11.74km Crest into downhill right.
Ignore no exit sign at 21.11 km
Narrow bridges at 1.69, 2.45, 4.52 and 4.79

A	S	P	D	A	R	T	E	M	E	S	I	A	Q	U	I	T	I	R	J	00.00 SA
E	M	O	C	Y	R	S	E	Z	I	R	P	S	E	R	P	I	M	O	A	30.37 L
H	O	R	A	F	O	O	T	E	G	D	I	R	B	A	K	N	O	O	N	14.67 SA
A	O	N	O	W	I	N	T	E	R	L	E	R	I	B	B	O	N	D	J	07.58 Bear L
N	G	O	P	U	G	S	Y	T	E	E	R	I	D	U	H	T	A	R	A	09.28 R
A	S	T	E	P	H	E	N	A	T	S	U	D	U	S	Y	S	B	N	U	23.74 SA
L	U	F	N	U	R	G	N	I	R	P	S	E	M	C	T	U	O	E	N	21.18 SA
P	I	I	R	F	T	I	O	H	A	M	L	A	N	E	R	G	A	T	T	20.33 SA
C	R	R	O	M	H	S	H	E	L	L	A	U	M	Q	U	U	T	E	D	20.33 L
W	I	D	A	O	R	L	E	V	A	R	G	W	E	G	O	A	P	N	O	18.45 R
D	S	A	D	S	E	Y	T	O	S	A	G	R	U	O	F	C	N	O	C	07.13 R
X	H	O	E	S	E	E	W	G	R	E	Y	R	O	A	D	A	A	K	L	05.15 R
I	N	F	M	O	N	K	E	Y	L	B	E	E	R	T	A	T	D	Q	J	14.27 SA
S	I	B	A	L	L	N	S	N	E	T	A	L	L	S	O	A	P	Y	X	05.15 SA
C	C	O	I	B	N	O	T	M	F	I	R	S	T	F	R	O	S	T	Z	11.36 L
N	A	D	F	Y	P	D	B	T	O	M	O	R	R	O	W	Y	E	R	G	21.04 Bear R
O	P	A	L	C	S	M	A	P	L	E	L	E	A	F	W	R	I	E	S	21.04 Acute L
C	N	O	R	E	V	O	C	S	I	D	E	A	L	E	F	T	O	V	R	24.05 L
S	H	I	D	D	E	N	K	O	W	H	E	E	L	T	I	X	E	O	N	26.11 L
T	A	L	L	W	O	L	D	S	M	O	K	E	Y	A	N	W	O	R	D	20.11 SA

1	0	0	1	2	1	2	1	2	0	1	2	1	1	0	0	2	2	1	0	CAS	14.67 - 56
1	3	8	3	3	4	9	8	4	7	1	2	4	8	7	3	6	1	8	9		18.48 - 76
.	1.69 - 69.8	18.88 - 57
3	0	9	6	7	6	5	4	0	5	2	2	6	8	1	0	1	1	8	2	4.01 - 72	21.04 - 76
6	8	1	2	4	7	2	8	5	8	1	2	7	8	3	8	1	8	8	8	5.15 - 76	24.05 - 72
																				7.13 - 62.8	26.11 - 57
																				7.71 - 72	28.16 - 72
R	L	S	S	L	R	S	L	S	S	R	2	L	R	S	S	R	R	S	L	11.23 - 54	28.84 - 22.5
		A	A			A		A	A		2			A	A			A		13.62 - 72	29.71 - 72

Blind Map

Follow the Blind map from the dot to the arrow to reach the end of Leg A. The map is to scale, but at a greater zoom than the EOS map.

The leg ends turning left into the Flying Spatula (where the rally started).

Caution:

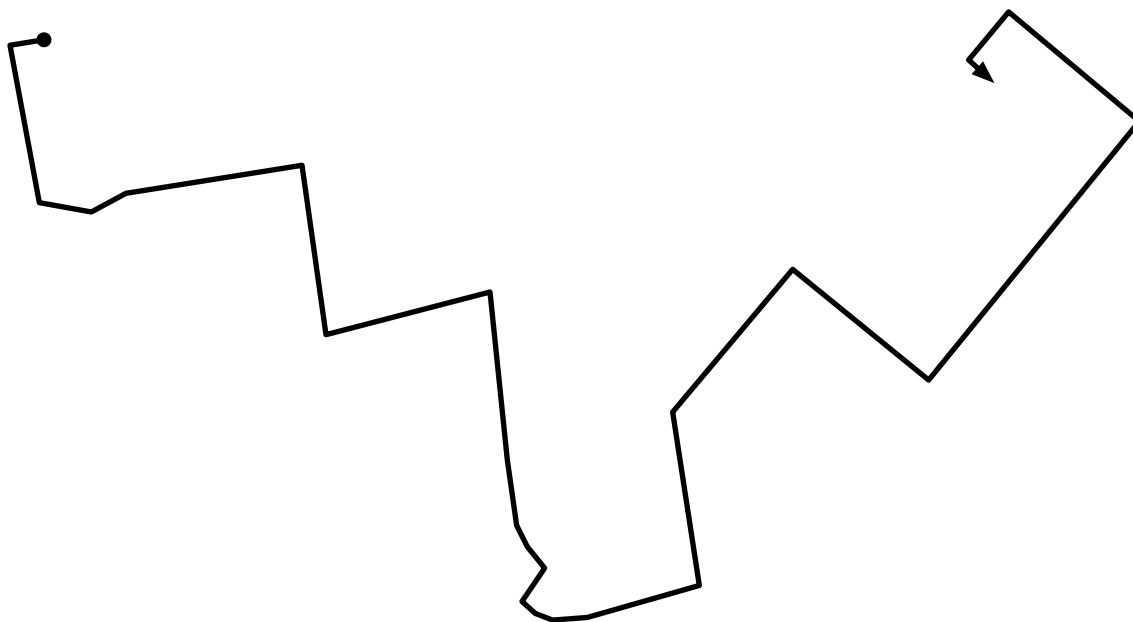
2.48km Downhill right after crest
9.53km Possible horse and buggy
next 1.5 km

CAS

0.00 - 57 km/h
4.35 - 72 km/h
5.4 - 76 km/h
9.53 - 72 km/h
11.6 - 53.4 km/h
13.31 - 76 km/h
13.77 - 53.5 km/h
16.14 - 76 km/h
19.63 - 57 km/h
20.48 - 54 km/h
21.45 - 72 km/h
22.59 - ET Take 12 minutes, 3 seconds
to reach end of leg

There will be time to rest before starting Leg B, but if you are very late you will have less rest time.

You will receive Leg B instructions a few minutes before your Leg B start time.



End of Section Info

Leg A - End of Section info

Section A1 - Length: 21.40 km Car 0 Time: ~ 11:25 am

Ends facing West on Southgate Township Road 26, turning right (North) onto Grey Road 14

Section A2 - Length: 23.31 km Car 0 Time: ~ 11:45 am

Ends facing West on Concession Rd 2 at Artemesia - Glenelg town line.
Continue West on Concession Rd 2.

Section A3 - Length: 30.37 km Car 0 Time: ~ 12:25 pm

Ends facing West on Concession 8, turning left (south) onto Sideroad 40.

Section A4 - Length: 29.72 km Car 0 Time: ~ 1:00 pm

Ends heading south west on Grey County Rd 4, turning left into the Flying Spatula Diner.

